



## Idle-Lock™ B-IDLEA556

### Idle Anti-Theft with AutoSense™

#### 2020 - 2021 Ford Interceptor Utility



### Introduction

Idle-Lock with AutoSense is an anti-theft device intended to allow the key to remain in the ignition with the engine running. The system is activated when the driver of the vehicle (with supplied key fob) exits the vehicle. At this time, the shifter will be locked in Park and if an unauthorized individual (no key fob present) attempts to shift the vehicle out of Park, the engine will shut off and the key will be locked in the ignition. The vehicle will not be able to be restarted until the key fob returns to the vehicle.

### Installation Instructions

**Disconnect vehicle battery before proceeding with installation**



#### WARNING

Disconnect the battery to prevent setting a check engine light.

### CAUTION

All electronic products are susceptible to damage from Electrostatic Discharge or ESD. Ground yourself before handling or working with the module and harnessing by first touching chassis ground, such as the barrel of the cigarette lighter.



It is the installer's responsibility to route and secure all wiring harnesses where they cannot be damaged by sharp objects, mechanical moving parts and high heat sources. Failure to do so could result in damage to the system or vehicle and create possible safety concerns for the operator and passengers.

It is important to avoid placing the module where it could encounter strong magnetic fields from high current cabling connected to motors, solenoids, etc. Also avoid radio frequency energy from antenna's or inverters next to the module. Finally, avoid high voltage spikes in vehicle wiring by always using diode clamped relays when installing upfitter circuits.

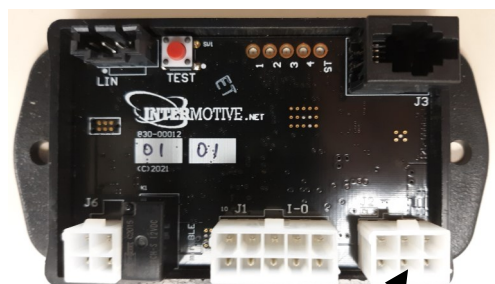
### IDLEA556 Module

Locate the module in an area away from any external heat sources (engine heat, heater ducts, etc.). Ensure when routing harnesses that the tilt steering column does not contact them in the full down position. When installing the harnesses, leave several inches of take-out such that the module can be removed if necessary.

## Installation Instructions (continued)

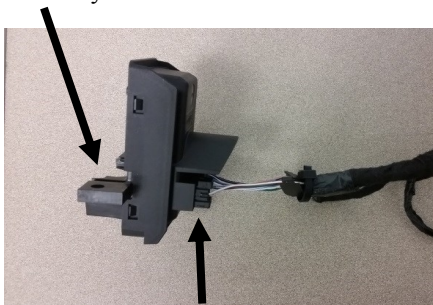
### Gateway Plug and Play Harness (6-pin connector)

1. Locate the vehicles Gateway Module (C2431). It will be mounted below the lower left dash panel behind the BCM.
2. Remove the harness behind the Gateway module by pressing the locking tab and pulling outward.
3. Plug the Female side of the InterMotive Gateway Harness into the back of the Gateway module. Ensure the connection is fully seated and secured by the locking tab.
4. Plug the Male side of the InterMotive Data Link Harness into the Gateway harness.
5. Secure the IDLEA556 Gateway harness so that it does not hang below the lower dash panel.



Data Link Harness  
plugs in here

Gateway Module



Gateway Harness



InterMotive Plug and Play  
Gateway Harness

### Key Fob

The supplied key fob is to be kept in the possession of the driver of the vehicle. When the fob is inside the vehicle, the vehicle will operate normally. When the fob is outside of the vehicle, it will not be possible to shift out of Park, the key will not be able to be removed from the ignition, the engine will shut off, and will not be able to restart until the fob returns to the vehicle.

**\* The key fob works best if it is placed in the front pocket of the driver.**



## Installation Instructions (continued)

### Idle-Lock Active LED

An LED is provided in the kit which lights when Idle-Lock is active.

1. Drill a 0.500" hole in the desired mounting location. One possibility is the dash panel to the left of the Steering Wheel.
2. Route the LED harness through the hole and mount the LED in the hole.
3. Slide the LED's lock nut onto the harness and snug it down onto the back of the LED.
4. Plug in the 4 pin (Black) connector of the LED harness into the mating connector on the Idle-Lock main harness.
5. Apply optional "Idle-Lock Active" label included in the kit.



### Ignition Switch Harness

The ignition switch must be accessed in order to connect the Idle-Lock ignition harness. Several dash trim panels must be removed.

- Using a non-marring pry tool, remove the lower finish panel from the center stack on the dash.
- Using a non-marring pry tool, remove the upper finish panel from the center stack on the dash.
- Locate the ignition switch connector and disconnect it from the ignition switch.
- Plug the OEM switch harness connector into the female connector of the Idle-Lock Ignition Switch harness.
- Connect the male Idle-Lock Ignition switch harness connector to the OEM ignition switch.



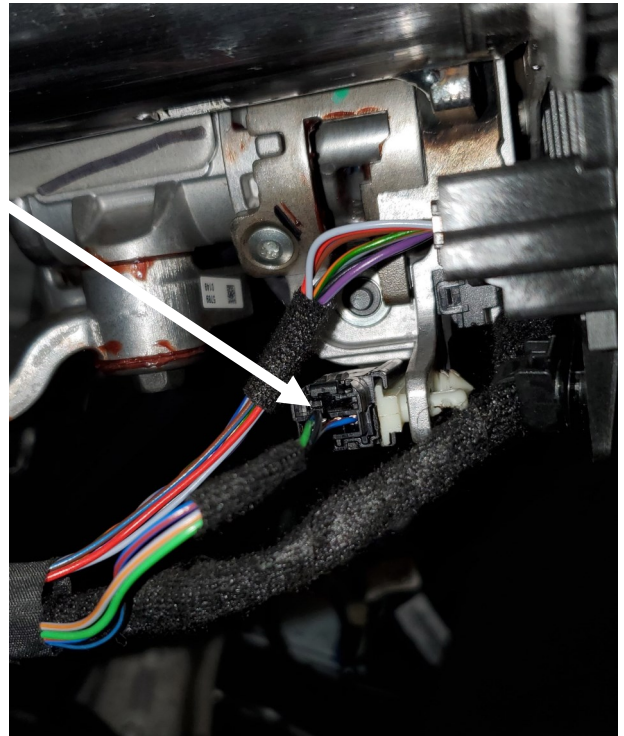


## Installation Instructions (continued)

### I/O Wiring, Features, and Descriptions: (Solder and heat shrink all connections)

#### Shift Lock Harness Installation

1. Locate the OEM shift lock solenoid at the side of the steering column (see photo).
2. Remove the OEM 4-pin Black connector from the shift lock solenoid assembly.
3. Idle Lock provides a shift lock T-harness. Plug one leg of the Idle Lock T-harness into the OEM shift lock solenoid, and the other leg into the OEM harness.
4. Route the third leg of the Idle Lock T-harness to the Idle Lock module on the left side of the dash. Plug the White 4 pin connector into the mating connector on the Idle Lock module.



#### Lock Output 1 (10 Second Delay)

Pin 3, White wire of the 10-pin connector is Idle-Lock output 1. This output (500mA max current) can control installer supplied normally closed relays to disable the trunk and weapon rack release buttons when Idle-Lock is active. When Idle-Lock activates this output, the relays will open the circuits from the buttons and disable them. This minimizes possible theft when Idle-Lock is active and the vehicle is unattended.

When Idle-Lock is enabled, this output becomes active after a 10 second delay. This output remains active until the key fob returns to the vehicle.

#### Lock Output 2

Pin 4, Tan wire of the 10-pin connector is Idle-Lock output 2. This output (500mA max current) can control installer supplied normally closed relays. When Idle-Lock activates this output, the relays will open the circuits. This output remains active until the key fob returns to the vehicle.

## **IDLEA556 Module Mounting**

Ensure all harnesses are properly connected and routed, and are not hanging below the dash area. Mount the module as described on page one and secure with supplied screws or double sided tape.

## **IDLEA556 Harness (4 Pin connector and 10 Pin connector)**

1. Plug the IDLEA556 10-Pin connector into the mating 10-pin connector on the IDLEA556 module.
2. Plug the IDLEA556 4-Pin connector into the mating 4-pin connector on the IDLEA556 module.
3. Plug the IDLEA556 6-Pin connector into the mating 6-pin connector on the IDLEA556 module.

## **Reconnect the vehicle battery**

## **Post Installation Operational Test**

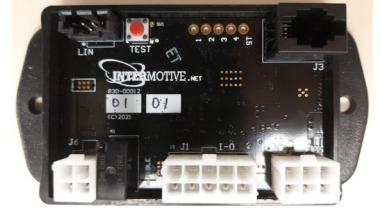
**Test 1.** With the key fob in the vehicle, Start the Engine.

- While the engine is running, exit the vehicle with the key fob, leave it outside the vehicle, and return to the vehicle.
- Verify that the supplied "Idle-Lock Active" LED is lit.
- Attempt to shift out of Park. The vehicle will shutdown.
- Attempt to restart the vehicle. It will not restart.
- Attempt to remove the key from the ignition. It will not be possible to remove the key.
- Exit the vehicle and return with the key fob.
- Verify that the "Idle-Lock Active LED is off.
- Attempt to restart the vehicle. The vehicle will restart.

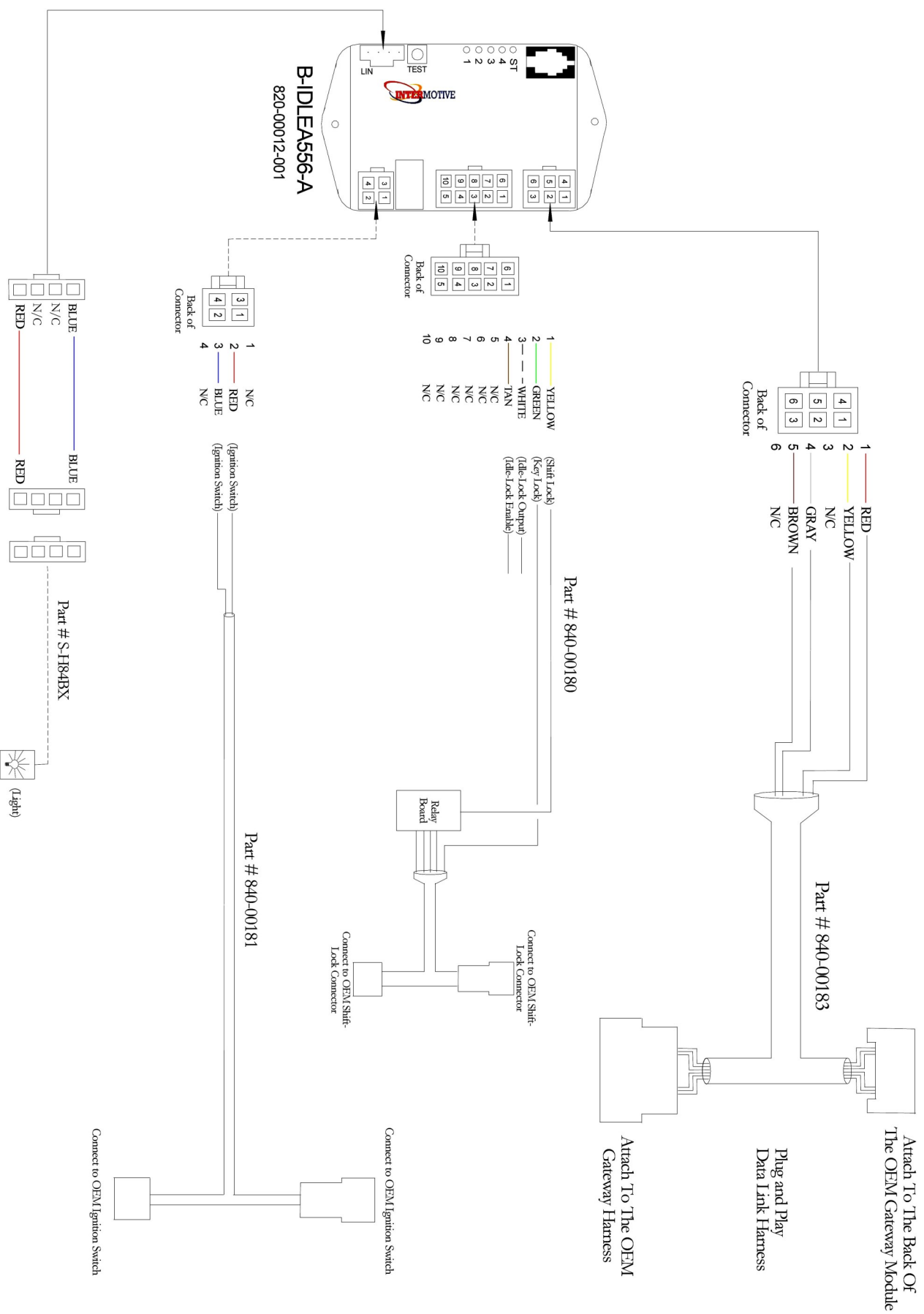
**Test 3.** If either of the Lock Outputs are wired to equipment, verify proper operation with key fob inside and outside of the vehicle.

**If the system fails any of the above tests, check the related wiring. If necessary, call InterMotive Technical Support at 530-823-1048. Do NOT release vehicle for service unless it has passed ALL of the above tests.**

**Leave in Vehicle  
Operating Instructions  
Idle-Lock™ B-IDLEA556  
Idle Anti-Theft with AutoSense™  
2020 - 2021 Ford Interceptor Utility**



Idle-Lock with AutoSense is an anti-theft device intended to allow the key to remain in the ignition with the engine running. The system is activated when the driver of the vehicle (with supplied key fob) exits the vehicle. At this time, the shifter will be locked in Park and if an unauthorized individual (no key fob present) attempts to shift out of Park, the engine will shut off and the key will be locked in the ignition. The vehicle will not be able to be restarted and the key will not be able to be removed from the ignition until the key fob returns to the vehicle.



**Submit product registration at [www.intermotive.net](http://www.intermotive.net)**

If the IDLEA556 fails any step in the Post Installation Test, review the installation instructions and check all connections.  
If necessary, call Intermotive Technical Support at (530) 823-1048.