

Instructions



A-AG753-A AutoGARD

2025 RAM DJ 2500-5500

Contact InterMotive for additional vehicle applications

Introduction

The A-AG753-A prevents the vehicle from being shifted out of Park unless the driver presses and releases a button on or under the dash. An audible alarm will sound whenever the button is pressed. The vehicle will be able to shift out of Park for 10 seconds after the button has been released.

Installation Instructions

IMPORTANT – READ BEFORE INSTALLATION

It is the installer's responsibility to route and secure all wiring harnesses where they cannot be damaged by sharp objects, mechanical moving parts and high heat sources. Failure to do so could result in damage to the system or vehicle and create possible safety concerns for the operator and passengers.

Avoid placing the module where it could encounter strong magnetic fields from high current cabling connected to motors, solenoids, etc. Avoid radio frequency energy from antennas or inverters next to the module. Avoid high voltage spikes in vehicle wiring by always using diode clamped relays and solenoids when installing upfitter circuits.

CAUTION

All electronic products are susceptible to damage from Electrostatic Discharge or ESD. Ground yourself before handling or working with the module and harnessing by first touching chassis ground, such as the barrel of the cigarette lighter.



Installation Instructions

Disconnect vehicle battery before proceeding with installation.



WARNING
Disconnect the battery to
prevent setting a check engine
light.

AutoGARD Module

Remove the lower dash panel below the steering column area and find a suitable location to mount the module. Secure using 2-sided foam tape, screws or wire ties. Locate the module in an area away from any high heat sources. Do not actually mount the module until all wire harnesses are routed and secure (last step of the installation is to mount the module).

Instructions

AutoGARD Push Button Switch Harness (Part #840-00151)



1. Drill a 0.500" inch hole in a location that is close enough to the shifter to be accessed with one hand while the other hand reaches the shifter. One recommended location is the bottom part of the clamshell. (Note: the clamshell will be removed in the next steps)
2. Unplug the 2-pin Black connector from the harness and route the connector through the previously drilled hole.
3. Install the button in the hole.
4. Plug the mating Black connectors together and then plug the 4-pin Molex connector into the mating connector at the AutoGARD module.

AutoGARD Shift Lock Harness (part #840-00440)

Shift Lock Connection

1. Remove the lower driver side dash panel. (If not already removed)
2. Remove the 3 screws on the underside of the steering column clamshell.
3. Rotate the steering wheel to access the tabs and separate the clamshell.
4. Removing the lower clamshell is easiest with the steering wheel rotated to the position shown. Pushing the clamshell part towards the front of the vehicle and also rotating the steering wheel in small movements will help with the removal (and reinstalling later).

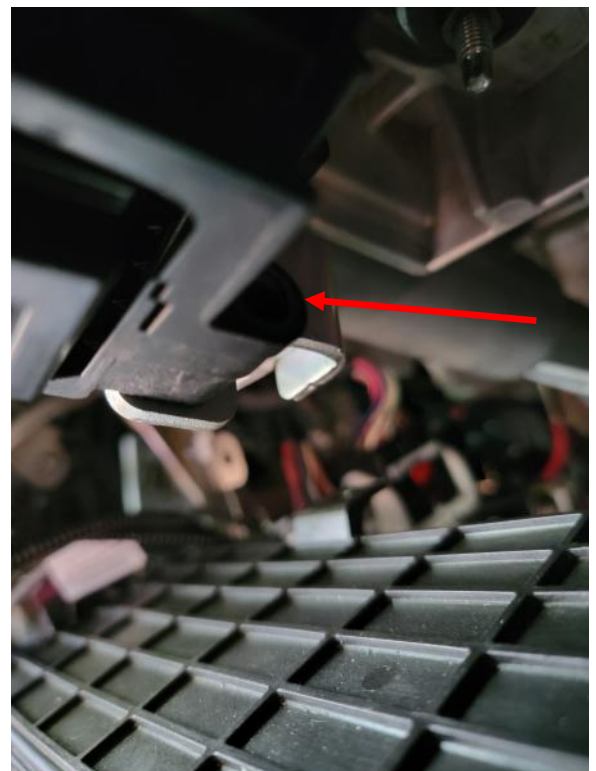
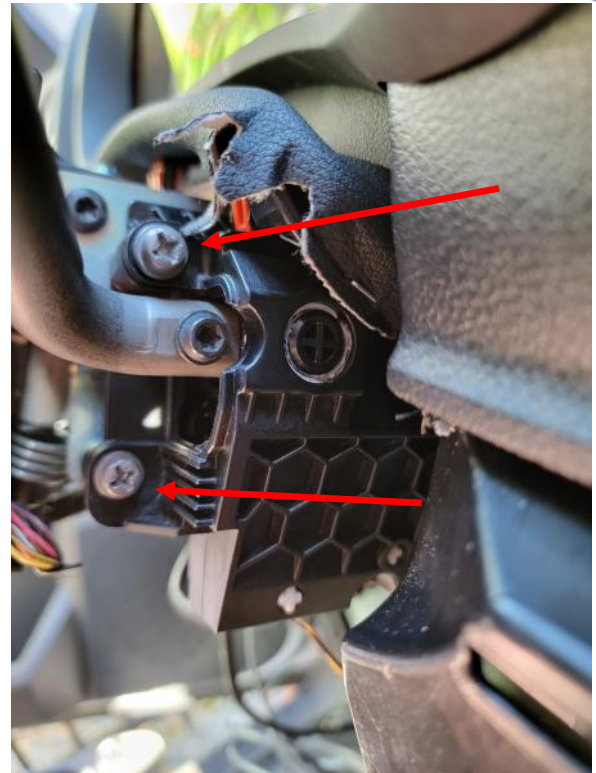


Instructions

AutoGARD Shift Lock Harness (part #840-00440)

Shift Lock Connection continued

5. Disconnect the 10w connector .
6. Locate and remove the 4 screws for the shifter module. (Upper rear screw not pictured) If equipped, removing the VSIM will grant extra space to access the lower rear screw.

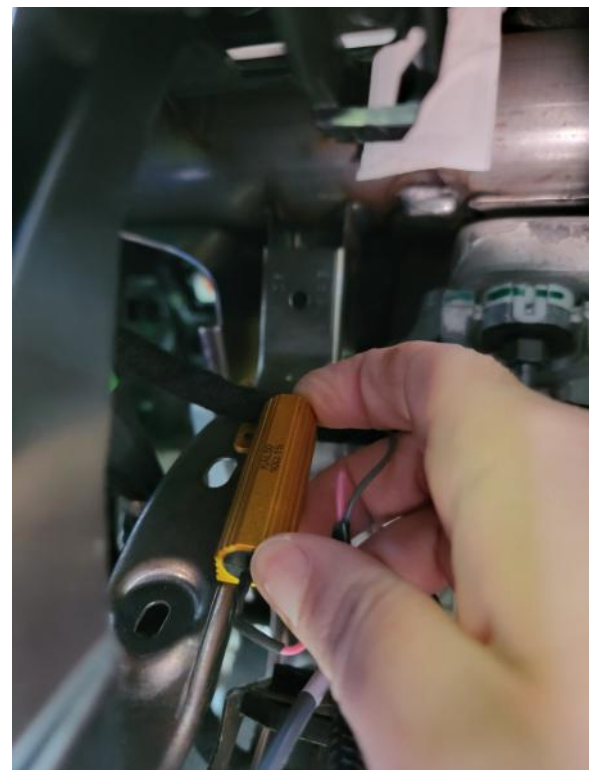
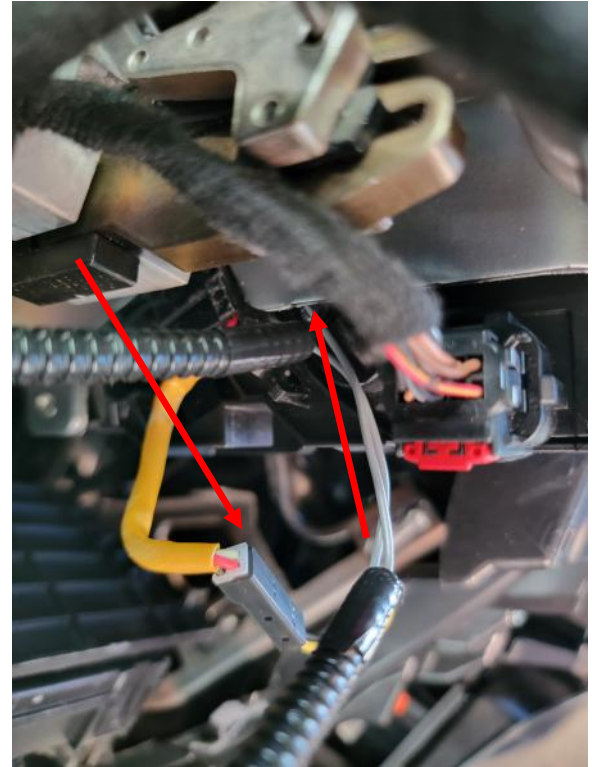


Instructions

AutoGARD Shift Lock Harness (part #840-00440)

Shift Lock Connection continued

7. Disconnect the 2w connector at the shifter module. Plug the OEM 2w into the mating connector on the 840-00440. Plug the other 2w on the 840-00440 harness into the shifter module.
 - Picture shows 2w connection with module installed on column.
8. Reinstall shifter module. Plug in 10w OEM connector.
9. Route the gold resistor to a location that it can be mounted to bare metal. Ensure that the resistor will not interfere with anything and that no harnesses will be resting on it. One possible location is shown to the left of the steering column.

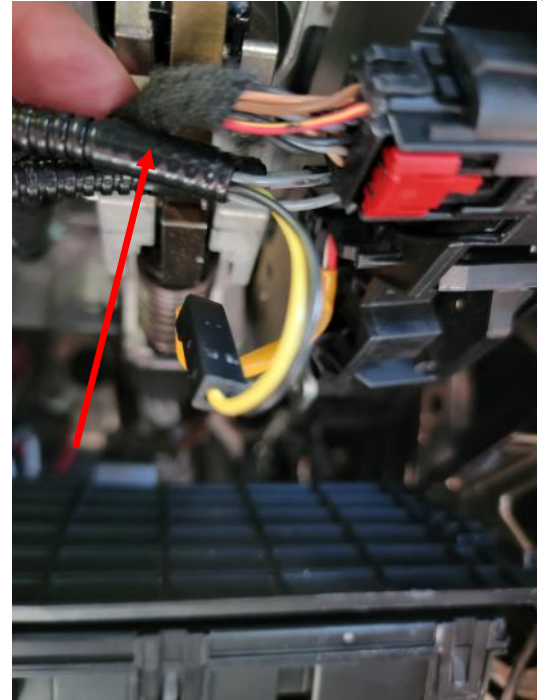


Instructions

AutoGARD Shift Lock Harness (part #840-00440)

Shift Lock Connection continued

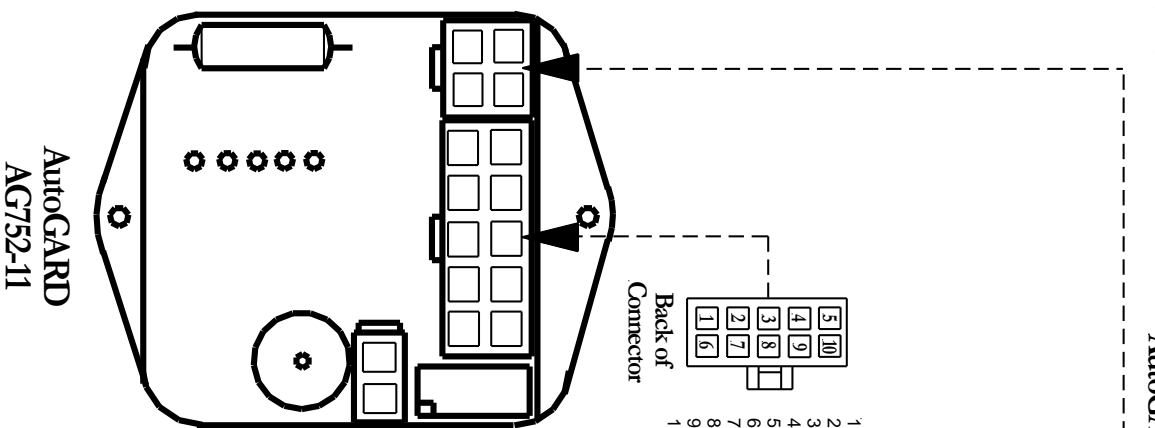
10. Zip tie the 840-00440 harnessing to the OEM 10w harness .
11. Locate the OEM OBDII connector on the lower dash panel and remove it. Plug the OEM connector into the mating OBDII connector on the 840-00440 harness. Plug the other OBDII connector into the dash panel.
12. Plug the connectors into the AutoGARD module and mount it in the desired location.
13. Reinstall steering wheel clamshell, VSIM (if equipped and previously removed), and lower dash panel.



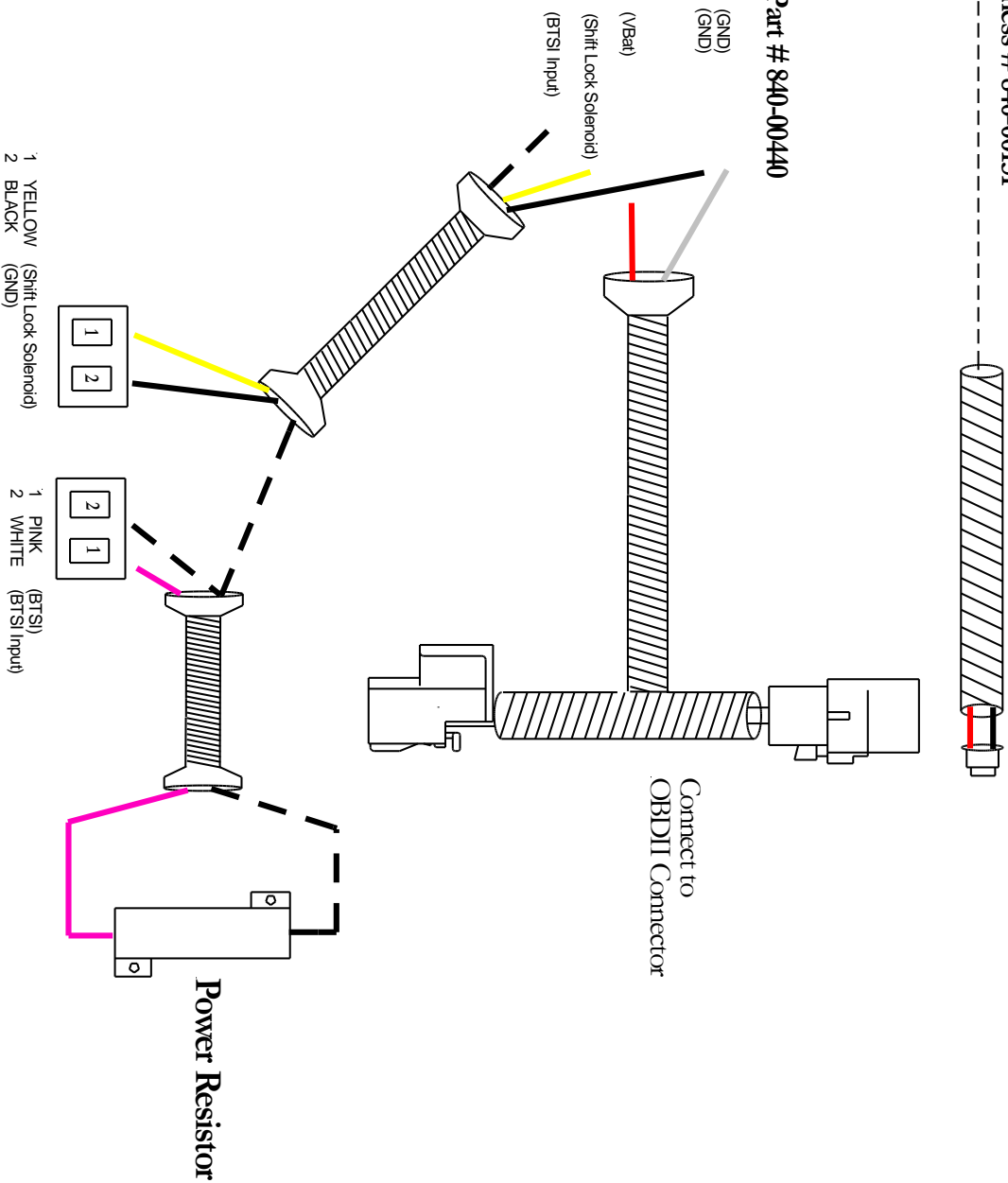
AutoGARD Operating Instructions

1. Ensure that the vehicle can not be shifted out of Park.
2. Press the previously installed button and confirm that an audible alarm is heard from the AutoGARD module.
3. Release the button, wait more than 10 seconds, and confirm that the vehicle cannot be shifted out of Park.
4. Press and release the button and confirm that the vehicle can be shifted out of Park within 10 seconds.

AutoGARD Switch Harness # 840-00151



Part # 840-00440



Submit product registration at www.intermotive.net

If the A-AG753-A fails any step in the Post Installation Check List, review the installation instructions and check all connections.

If necessary, call InterMotive Technical Support at (530) 823-1048.