



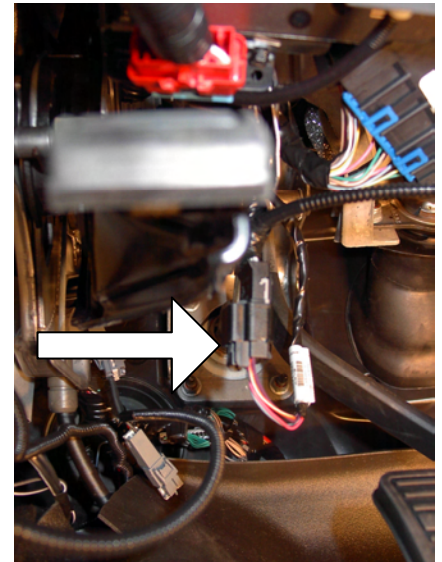
An ISO 9001:2000 Registered Company

## BrakeMax BMC602-A Installation Instructions 2008 - 2010 Chevy 610

Reference the appropriate vehicle shop manual as needed and use proper shop practices to protect personnel and vehicle.

### HARNESSES

1. Disconnect the battery negative cable.
2. Locate the OEM black 4-pin connector located on the right side of the park brake and inline with service brake on/off switch (Fig 1). Separate the connector and connect the BMC602-A black 4-pin T-harness connector with the OEM connector halves. Ensure that the connectors are fully seated.
3. Pull the OEM TOW/HAUL switch forward to reveal the back of the switch.
4. Remove the OEM black, 4-pin connector from the OEM TOW/HAUL switch and connect the BMC602-A black, 4-pin connector in-series with the OEM connector and the switch.
5. Position/secure the BMC602-A Control Module under the dash near the steering column area.
6. Plug the BMC602-A Harness Connector into the BMC602-A Control Module.
7. Connect the battery negative cable.



(Fig. 1)

### FINAL STEPS AND INSPECTION PROCEDURE

8. Prior to reinstalling components, perform a functional test.
9. Set the park brake and start the engine.
10. Verify that the "Tow/Haul" light illuminates on the vehicle display.
11. Finish routing the BMC602-A harness and retain as needed to protect the harness.



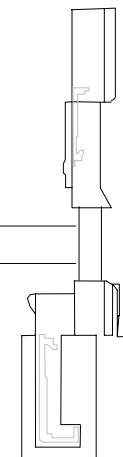
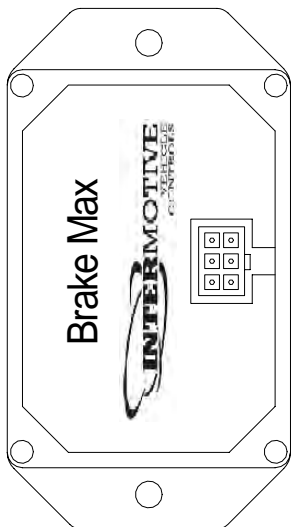
An ISO 9001:2000 Registered Company

## BrakeMax Operation Instructions

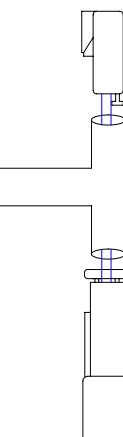
- When the vehicle is started, tow-haul mode is automatically engaged and the tow-haul light will be on.
- To deactivate tow-haul mode, press the tow-haul mode button.
- When vehicle is restarted, tow-haul mode will again be automatically reengaged.
- See OEM owner's manual for features and benefits of tow-haul mode.

# REVISIONS

DATE : CHANGE :



Install At Black  
4 - Pin Connector



Install Between The OEM  
TOW / HAUL Switch  
And Connector

PRODUCT :

## CHEVY BRAKEMAX

DRAWN BY: BRUCE HODGE

PART NO: BMC602-A

DATE DRAWN : 11/9/07

CHECK BY: Ed Prokopik

DATE CHECKED : 11/14/07